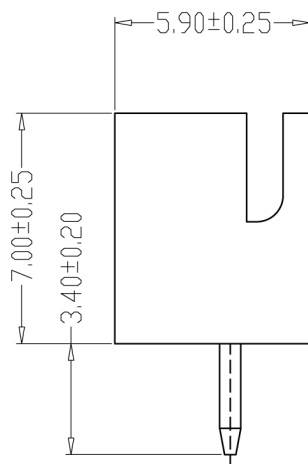
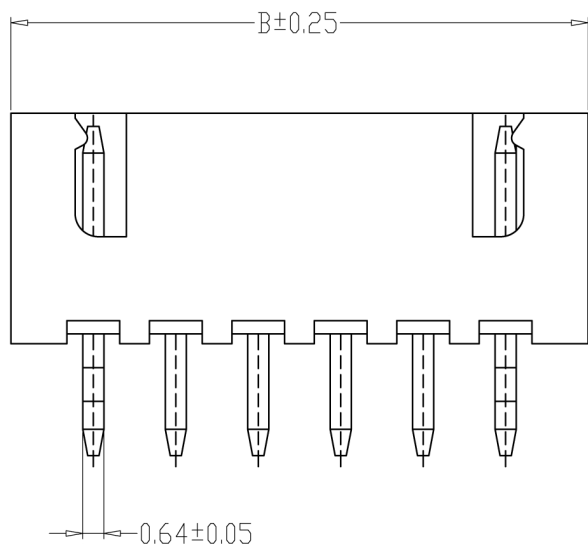
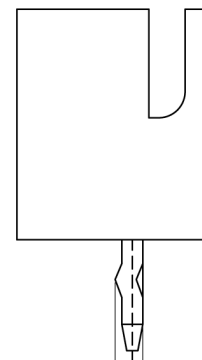


Kinghelm®

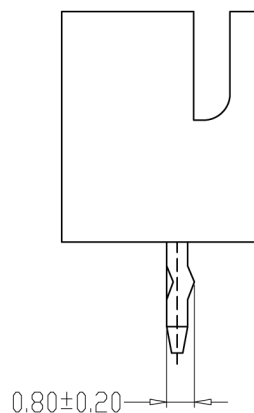
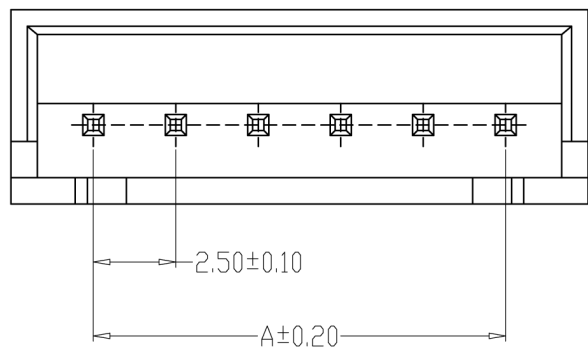
型号: KH-XH- (2-10) A-Z



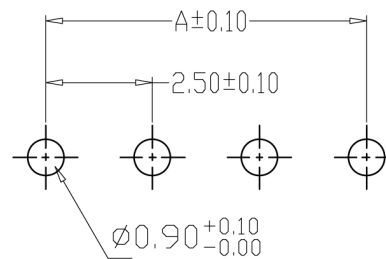
TYPE 1



TYPE 2



TYPE 3



PCB LAYOUT

SPECIFICATIONS

- 1、Current Rating: 3A AC, DC
- 2、Voltage Rating: 250V AC, DC
- 3、Temperature Range: $-25^{\circ}\text{C} \sim +85^{\circ}\text{C}$
- 4、Contact Resistance: $20\text{m}\Omega$ Max
- 5、Insulation Resistance: $1000\text{M}\Omega$ Min
- 6、Withstanding Voltage: 1000V AC/minute
- 7、Material: Wafer Nylon66, UL94V-0
PIN Brass Tin-plated

编号	尺寸 (mm)	
	A	B
A2501-02A	2.50	7.50
A2501-03A	5.00	10.00
A2501-04A	7.50	12.50
A2501-05A	10.00	15.00
A2501-06A	12.50	17.50
A2501-07A	15.00	20.00
A2501-08A	17.50	22.50
A2501-09A	20.00	25.00
A2501-10A	22.50	27.50
A2501-11A	25.00	30.00
A2501-12A	27.50	32.50
A2501-20A	47.50	52.50

制图 DRAWN	变更内容 DESCRIPTION	日期 DATE	GENERAL TOLERANCE		制图 DRAWING	钱岳生 2013、07、01	料号 PART NO.	A2501-NA	版本 REV.	A
			X.±0.25	X.±2'	审核 CHECK	张名 2013、07、03	品名 TITLE	TJC3直针 WAFER DIP TYPE	页次 SHEET	1/1
			.X±0.20	.X±1'	核准 APPROVAL	张名 2013、07、05	客户料号 CUTM. NO.	型号: KH-XH-3A-Z		
			.XX±0.15	.XX±0.5'	单位 UNITS	MM	比例 SCALE	1:1		
			.XXX±0.10	.XXX±0.5'			WWW.BDS666.COM	0755-83044319		