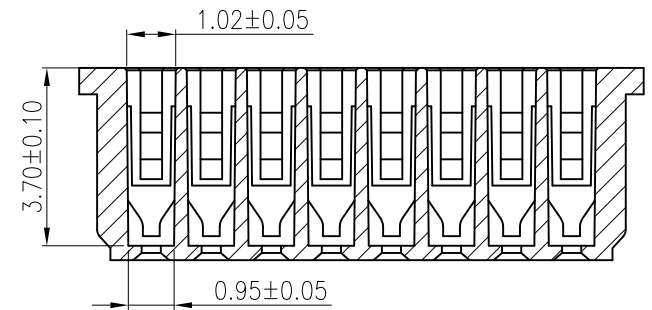
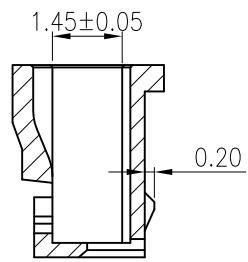
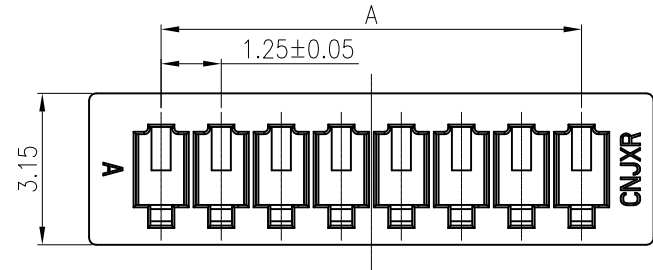


Kinghelm®

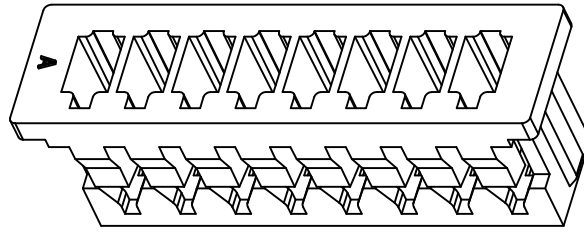
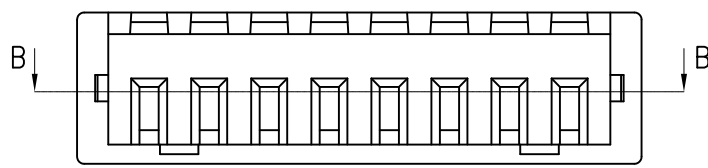
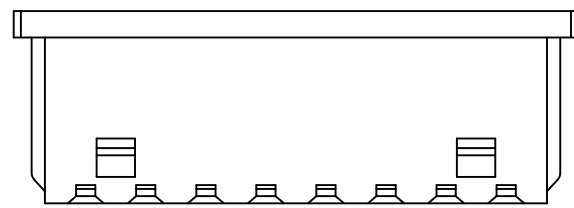
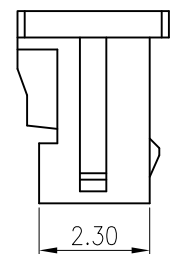
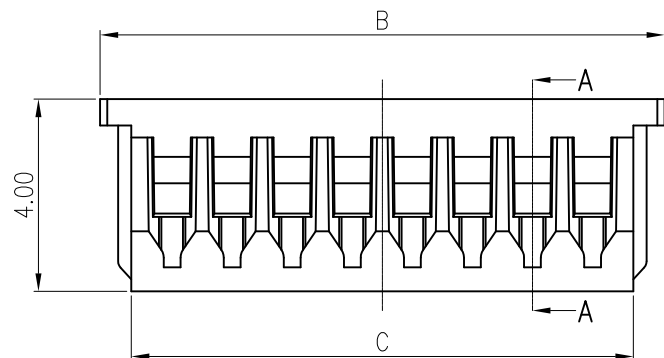
Engineer Drawing

7	8	9
REV	ECN NO.	DESCRIPTION
A/0		RELEASE TO PRODUCTION
		DATE
		11/10/21'
		APP'D
		Colinye



A-A

B-B



Poles	A	B	C
2	1.25	4.25	2.95
3	2.50	5.50	4.20
4	3.75	6.75	5.45
5	5.00	8.00	6.70
6	6.25	9.25	7.95
7	7.50	10.50	9.20
8	8.75	11.75	10.45
9	10.00	13.00	11.70
10	11.25	14.25	12.95
11	12.50	15.50	14.20
12	13.75	16.75	15.45
13	15.00	18.00	16.70
14	16.25	19.25	17.95
15	17.50	20.50	19.20
16	18.75	21.75	20.45

NOTES:

1. Material: Nylon66, UL94V-0
2. Color: Natural(White)
3. Current Rating: 2A AC,DC
4. Voltage Rating: 125V AC,DC
5. Temperature Rang: -25°C~+85°C
6. Stroage Temperature Rang: <30°C 60%RH
7. Contact Resistance: 20mΩ Max
8. Insulation Resistance: 100MΩ Min
9. Withstanding Voltage: 250V AC/minute
10. Ordering Code: A1250H-x

<p>TOLERANCE</p> <p>X. ±0.30</p> <p>X.X ±0.25</p> <p>X.XX ±0.20</p> <p>Angle ±3°</p> <p>UNLESS OTHERWISE SPECIFIED</p>	APPROVALS		DATE	深圳市金航标电子有限公司		www.kinghelm.com.cn		
	DRAWN <i>Zhang Liao Tao</i>		11/10/21'	KH-A1250H-3P-JK		0755-28190160		
	CHK'D <i>Art Shi</i>		11/10/21'	PART NO.	A1250H-x	TITLE:		WIRE TO BOARD, PLUG, PITCH 1.25mm, CRIMP TYPE, INSULATOR
	APP'D <i>Art Shi</i>		11/10/21'	DRAWING NO.	EN-A1250H-x			
	UNITS mm	SCALE 1:1	SIZE: A4		SHEET 1 OF 1	097	REV.A/0	